



## **Northeast Florida Evaluation and Appraisal Report Schedule: Engaging in Community Comprehensive Planning**

As required by law, Florida counties and cities adopt Comprehensive (Comp) Plans, under the authority of the Department of Community Affairs (DCA), in an attempt to direct how our communities grow. All counties and cities are not created equal, however. Some counties and cities have comprehensive plans that are more protective of natural resources than others. Some are also more protective of the vision in their comp plan, and are less permissive of amendments that would provide exceptions for incompatible development and diminish the comp plan's effectiveness.

Whether your county or city's comp plan is strong or weak, ironclad or easily amended, ALL comprehensive plans are required to undergo an Evaluation and Appraisal Report (EAR) every seven years. During this process, the county or city undertakes an analysis of their comprehensive plan—whether it's working to create the type of community it was intended to, if exceptions in the form of amendments have been made too easily or not easily enough... and this EAR process also provides an important opportunity for the people like you to share your opinion of how the plan is meeting your needs for natural resource conservation.

### **Step One:**

#### **Find out when your county or city's next EAR review is due**

Cities and counties vary on how far in advance of the due date they begin work on their EAR. It makes sense to check in with their planning department up to a year in advance to make sure you know what their timeline will be. [Check the schedule for Northeast Florida's EAR dates at the end of this document.](#)

### **Step Two:**

#### **Take a look online at your county or city's Comp Plan**

Their comp plan may be posted [here](#) on the DCA website. If not, your county or city may have it available on their website, or available by request to your planning department.

### **Step Three:**

#### **Contact your county or city's planning department to find out the schedule for the EAR process and where your opportunities will be for public comment**

Your best bet is to tap into the process early. A [flow chart of the EAR process](#) is included at the end of this document, to help you identify where your county or city is in their EAR process.

### **Step Four:**

#### **Get involved!**

Attend public meetings and/or send them written comments. Regardless of how you do it, it's important that you share your vision for your county or city's future growth with their planning department.

---

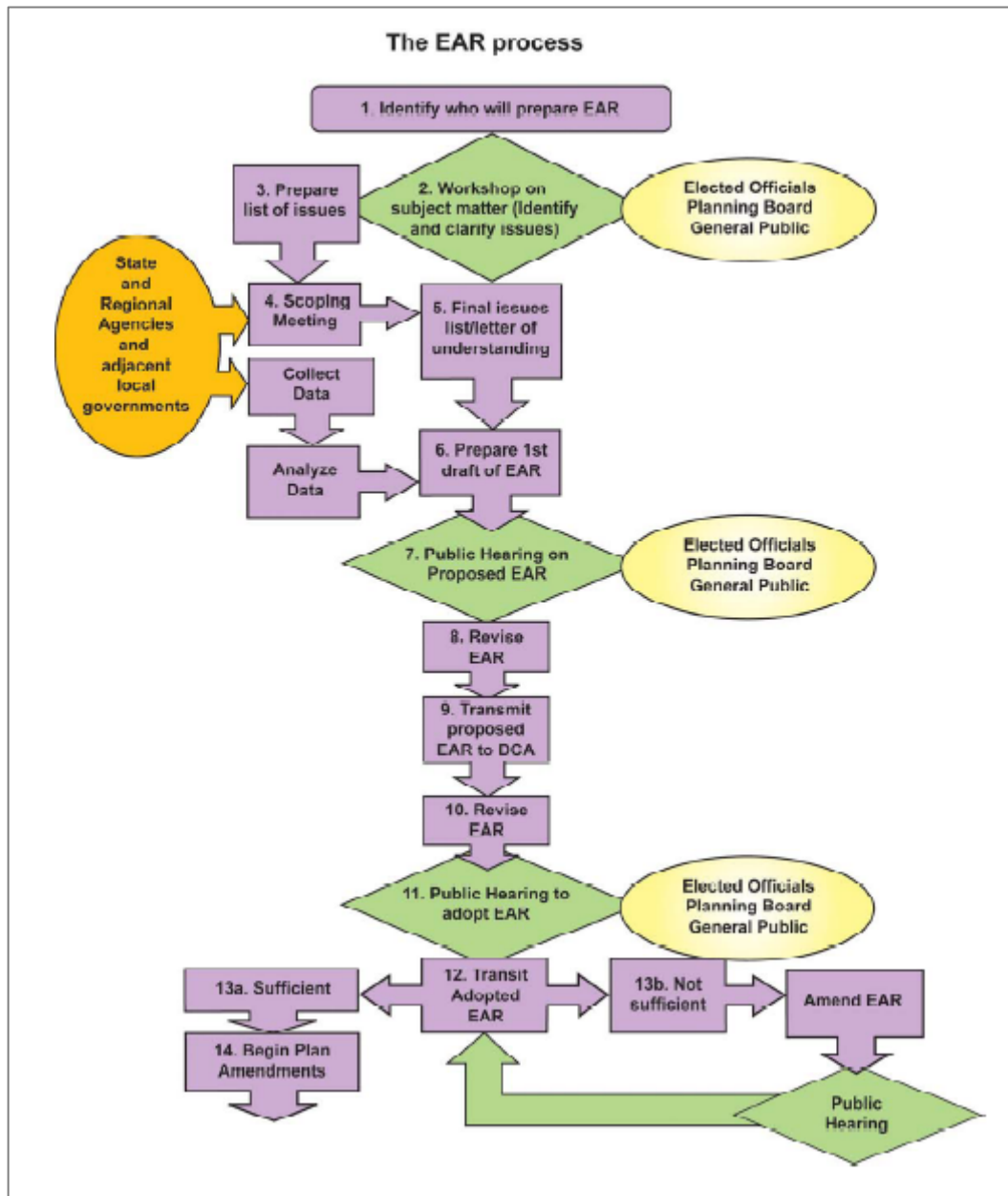
### **Additional Resources**

DCA site on the EAR process. . . . . <http://www.dca.state.fl.us/fdcp/dcp/EAR/>

DCA site on Comprehensive Planning . . . . <http://www.dca.state.fl.us/fdcp/dcp/compplanning/index.cfm>

### EAR Process Flowchart from the Department of Community Affairs

<http://www.dca.state.fl.us/fdcp/dcp/EAR/flow.pdf>



**EAR Due Dates for Northeast Florida from the Department of Community Affairs**

These are the dates upon which completed EARs are due to DCA from each county and city. The EAR process and opportunities for public comment will start in these areas much earlier.

<b>Alachua Co.</b>	<b>9/1/2009</b>
Alachua (city)	9/1/2010
Archer	10/1/2010
Gainesville	11/1/2010
Hawthorne	12/1/2010
High Springs	1/1/2011
Lacrosse	2/1/2011
Micanopy	2/1/2011
Newberry	4/1/2011
Waldo	5/1/2011
<b>Baker Co.</b>	<b>3/1/2008</b>
Glen St. Mary	3/1/2009
Macclenny	4/1/2009
<b>Bradford Co.</b>	<b>12/1/2009</b>
Brooker	2/1/2011
Hampton	3/1/2011
Lawtey	4/1/2011
Starke	5/1/2011
<b>Clay Co.</b>	<b>1/1/2007</b>
Green Cove Spgs	1/1/2008
Keystone Heights	2/1/2008
Orange Park	3/1/2008
Penney Farms	4/1/2008
<b>Columbia Co.</b>	<b>9/1/2008</b>
Fort White	10/1/2009
Lake City	4/1/2010
<b>Duval Co.</b>	<b>10/1/2007</b>
Atlantic Beach	10/1/2008
Baldwin	11/1/2008
Jacksonville Beach	12/1/2008
Neptune Beach	1/1/2009
<b>Flagler County</b>	<b>8/1/2009</b>
Beverly Beach	8/1/2010
Bunnell	9/1/2010
Flagler Beach	10/1/2010
Marineland	11/1/2010
Palm Coast	11/1/2010

<b>Gilchrist Co.</b>	<b>10/1/2009</b>
Bell	10/1/2010
Fanning Springs	11/1/2010
Trenton	12/1/2010
<b>Hamilton Co.</b>	<b>10/1/2008</b>
Jasper	9/1/2009
Jennings	10/1/2009
White Springs	1/1/2010
<b>Nassau Co.</b>	<b>12/1/2007</b>
Callahan	2/1/2009
Fernandina Beach	1/1/2009
Hilliard	3/1/2009
<b>Putnam Co.</b>	<b>11/1/2009</b>
Crescent City	3/1/2011
Interlachen	4/1/2011
Palatka	5/1/2011
Pomona Park	6/1/2011
Welaka	6/1/2011
<b>St. Johns Co.</b>	<b>9/1/2007</b>
Hastings	9/1/2008
St. Augustine	10/1/2008
St. Augustine Beach	11/1/2008
<b>Suwannee County</b>	<b>8/1/2009</b>
Branford	8/1/2010
Live Oak	9/1/2010
<b>Union Co.</b>	<b>11/1/2009</b>
Lake Butler	4/1/2011
Raiford	5/1/2011
Worthington Springs	6/1/2011